



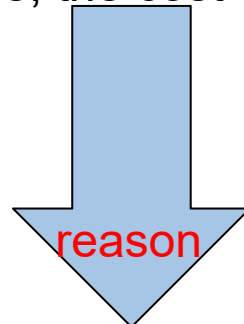
We design and manufacture automatic machine for the PCBA/SMT and Thru-hole industries in Shenzhen China. We help companies looking to low cost equipment with smart, ROI-driven assembly equipment solutions.



S-6200 Nozzle cleaning machine

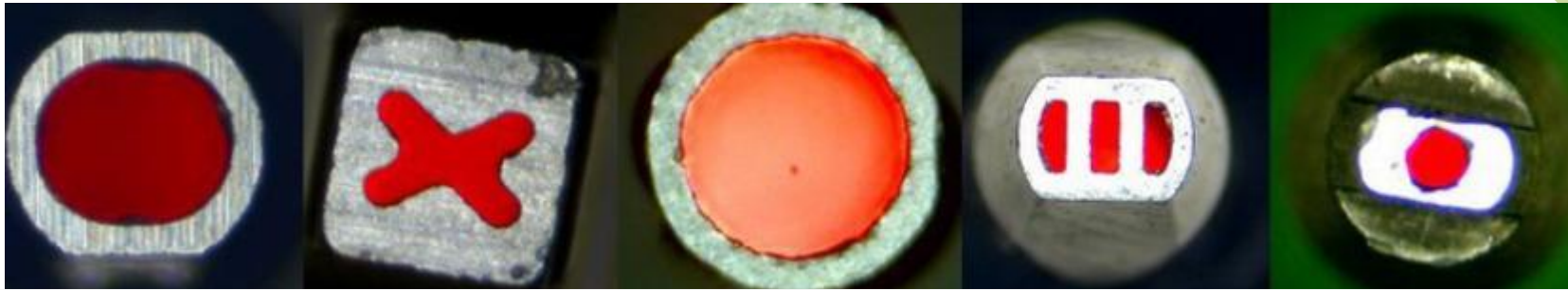
Does the following phenomenon occur in our production?

1. When the inventory loss of large loss of components can not find the reason
2. After the program is set up, a large number of components are adhered to deviation or dislocation
3. Whether the machine often alarm, suction nozzle tape components
4. Confirm whether the machine is in good condition ,also produce a large number of missing products
5. Whether the number of downtime increased, affecting capacity
6. Whether the purchase replacement nozzle more frequent, nozzle consumption is particularly large, the cost can not come down



nozzle abnormal

S-6200 Nozzle cleaning machine



To create greater profits for customers

✔ Improve patch quality

Reduce the throw rate by 20%-30%

🕒 Cut labor costs

It can reduce 1-2 workers and save 36,000 to 85,000 yuan per year

📉 Reduce component costs







At a 1 percent scrap rate, a year's worth of nozzle costs is considerable

🏭 Increase production capacity

Maintenance once a week or twice a year, one line can save 12-34 hours for production



Result of Washing Nozzle

Maker	Before		After
HITACHI		Cleaning for 6 minutes	
YAMAHA		Cleaning for 6 minutes	
Panasonic		Cleaning for 6 minutes	

S-6200 Nozzle cleaning machine



Cleaning Process



Features of Nozzle Cleaner

The effect of Carbon reduction by using distilled water

Possible to clean 12 nozzles at the same time

Easy to operate with touch panel

Reduce the time to change the nozzle by using the nozzle holder



S-6200 Nozzle cleaning machine

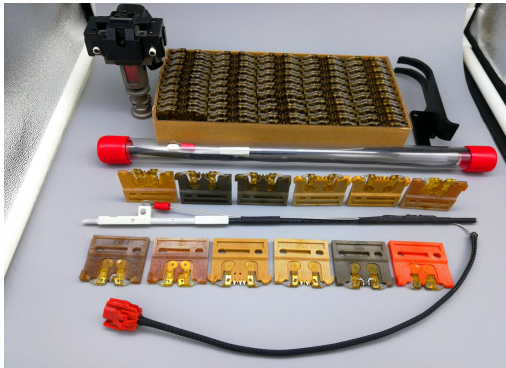
- Machine parameter:
- Size(L*W*H) 598×396×365 MM
- Power supply 2P2W, 220VAC , 50/60Hz, 20A
- Power supply requirements 250W
- Air pressure 0.5 – 0.6MPa
- Weight About 40KG
- Electrical control parameter:
- Total power 200W
- Control method Touch screen+PLC
- Air source Pure compressed air
- Injection pressure 0.4 MPa
- Air consumption Less than 280NL/min
- Liquid type Industrial purified water
- Liquid consumption 300cc/hour
- Liquid storage capacity 800cc
- Intake pipe / drain pipe $\varnothing 8 / \varnothing 6$
- Specification for nozzle tray The default 30 nozzles
- Specification for cleaning nozzle 0201 – 2512 (inch)
- Noise 35-60 dB



S-6200 Nozzle cleaning machine

- ✘ Efficient cleaning: 1. One station cleaning, wet cleaning machine, high pressure cleaning again
 - 2. Compatible with 12 station trays and 24 station trays
 - 3. Users can customize 1-12 and 1-24 station cleaning at will.
 - 4. Visual dynamic cleaning
 - 5. Usability and clearing of different brands and models of nozzles (strong compatibility)
-
- ✘ Solvent collection: The solvent after cleaning is temporarily stored in the water collection box. When the water is full, it will automatically prompt and stop.
-
- ✘ Self-test function: sensor detection is detected in each moving part, and the cause of the malfunction is displayed.
-
- ✘ Simple operation: color man-machine interface, built-in help instructions
-
- ✘ Stability: use PLC controller and electrical components and imported pneumatic components

Spare Parts Support



Panasonic

Universal Instruments



FUJI XP142/143

yamahaYG200

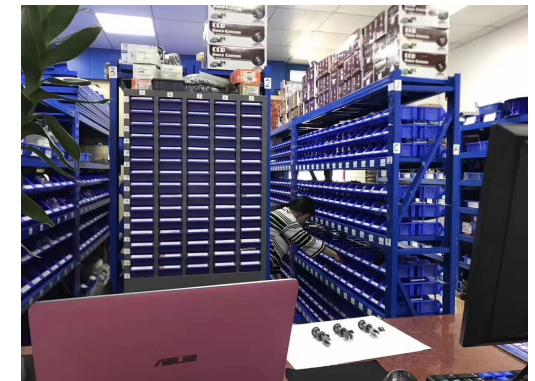
HA099

CN 110

FUJI NXT/H08M
0.7

FUJI NXT/H04
10.0

55USD 13USD 15USD 18USD 24USD 23USD



Best After-sales service

- **Worldwide Support**
- **Free Installation/
Training**
- **1 day lead-time (spare
parts)**
- **1 Month customize
solution**



Welcome inquiry

1, Please visit : www.smthelp.com

2, Find us more: <https://www.facebook.com/autoinsertion>

3, Know more our team: <https://cn.linkedin.com/in/smtsupplier>

4, Welcome to our factory in Shenzhen China

5, Google: Auto+Insertion

6, See machine working video: youtube - Auto Insertion

7, Looking forward to your email: info@smthelp.com